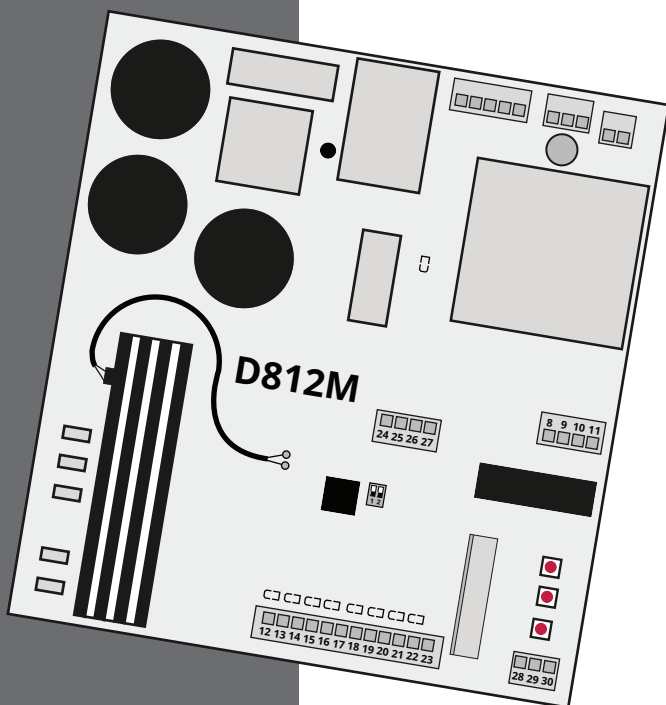


D812M

- 230 Vac control unit with inverter
- 230 Vac for three-phase motors with delta connections



Vers. firmware 2049

D-MNLOD812M 21-09-2021 - Rev.05

IT - Istruzioni originali

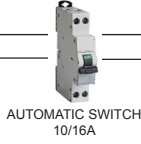


RoHS
Compliant
2002/95/EC

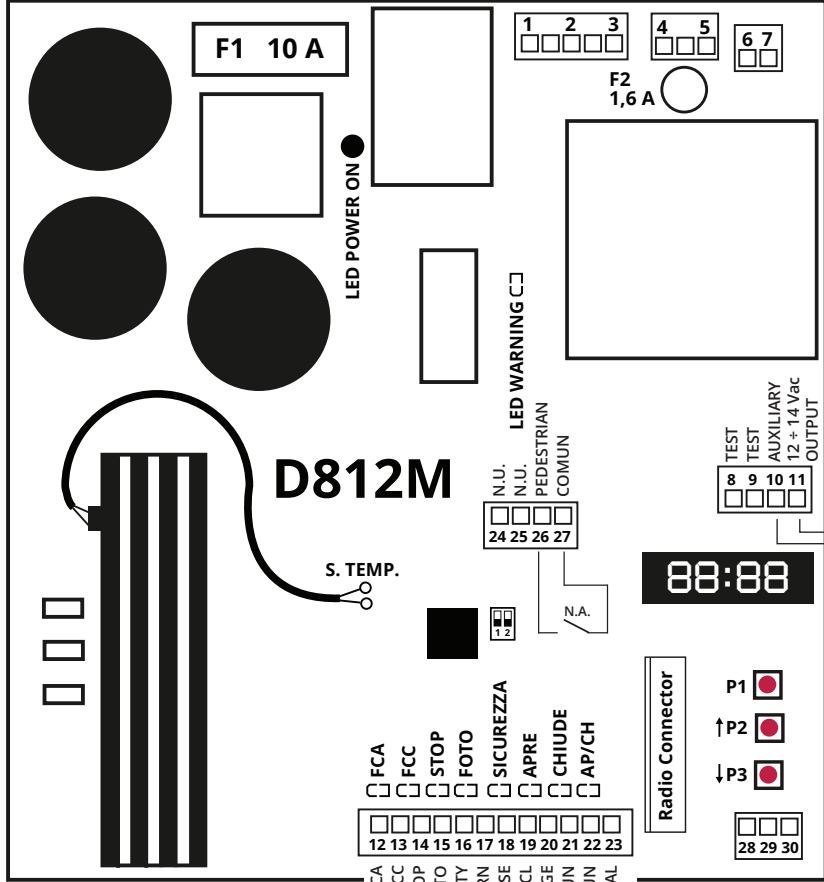




230 Vac

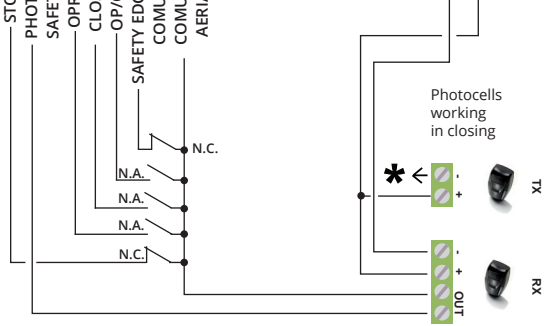


Signal light 230 Vac
For the connection of a 12 Vac lamp with or without flashing card: See the Page n° 12



MF1 Three-phase output for three-phase motors and "delta" connections
MF2
MF3

* Connect this point to terminal no. 8 for the photo-test. Otherwise connect it to the terminal board no. 10



FOREWORD

This manual provides all the specific information you need to familiarize yourself with and correctly operate your unit. Read it very carefully when you purchase the instrument and consult it whenever you have doubts regarding use and before performing any maintenance operations. Nologo has the right to modify the product without previous notice.

ENVIRONMENTAL PROTECTION MEASURES

Information regarding the environment for customers within the European Union. European Directive EC 2002/96 requires that units bearing this symbol on the unit and/or on the packaging be disposed of separately from undifferentiated urban wastes.

The symbol indicates that the product must not be disposed of with the normal household wastes. The owner is responsible for disposing of this product and other electrical and electronic equipment through specific waste collection facilities indicated by the government or local public agencies. Correct disposal and recycling help prevent any potentially negative impact on the environment and human health. To receive more detailed information regarding disposal of your unit, we recommend that you contact the competent public agencies, the waste collection.

Piccola legenda

LSO or FCA	Open limit switch
LSC or FCC	Close limit switch
OP/CL	Control to drive the gate
PEDESTRIAN	in sliding units: control partial opening
Vac	(alternate current) alternating voltage
Vdc	(discrete current) direct voltage
NC	normally closed
NA o NO	normally open
Isolated contact	isolated from power supply

INDEX

Par.	Description	Pag.
1	Scheme of the control unit	6
1.1	Description of the electrical connections	8
2	Use and functions of the control panel	9
2.1	State of the control unit	9
2.2	Settings and parameters	9
2.3	Example how to use the MENU and information	9
2.4	Set up a password for programming	10
2.5	Display the number of cycles and the speed of the motor	11
2.6	Desactivation of the cycle when the control panel will be turned on	11
3	Installation of the control unit	12
3.1	Connection of the TENSION and MOTOR	12
3.2	Connection of the lamp 230 Vac or 12 Vac	12
3.3	PRE-FLASHING time	12
3.4	Connection of the AERIAL	13
3.5	STOP connection	13
3.6	Connection of the 8k2 safety edge or N.C.	13
3.7	Connection of the Open and Close limit switch	13
3.8	The connection of PEDESTRIAN or OP/CL	14
3.9	Connection of the PHOTOCCELL (only when closing)	14
3.10	Connection of the PHOTOCCELL (activated when closing) with TEST	15
4	ACTIVATE the single OUTPUTS	15
5	Operating modes and adjustments	16
5.1	Logic of functions	16
5.2	Working time	17
5.3	Set SPEED and ACCELERATION	18
5.4	SCHEME relation between SPEED and FRQUENCY of the motor	19
6	RESET of the control unit and restore of factory default settings	20
6.1	Restore factory settings	20
6.2	SAVE SET UP and CHECK of the parameters	20
7	LIST of the FUNCTIONS	21
8	Problems	25
9	Note	26
10	Declaration of CE conformity	27

SAFETY PRECAUTIONS

We remind that the installations of gates and automatic doors must be executed from qualified personnels according to the norms. Before installing check the strength and mechanic part of the gate or door, check that the mechanical stops are suitable to stop immediately the cycle of the gate or door even in case of faulty limit switches or during the manual cycle. For your security we recommend to install a STOP switch when activated it stops immediately the gate. The switch has a N.C. opening in case is activated (as shown in par. no. 3.5)

SYMBOLS AND WARNING



Dangerous

This is a warning and if it is not respect it can provoque material damage



Damage

For safety reasons, protect your face during the connection



Device under tension

The installation should be done only from professional installer



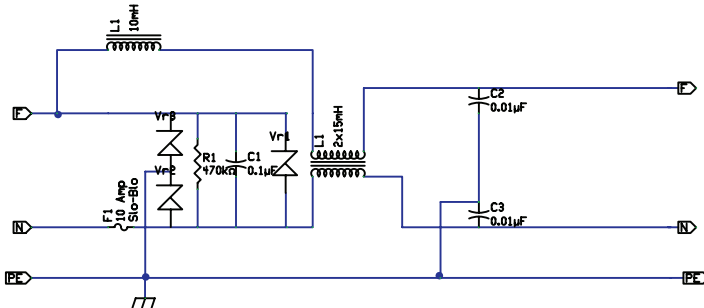
Read carefully the operating manual

Read carefully this manul before installation and keep it for the future



Dangerous for overheated surface

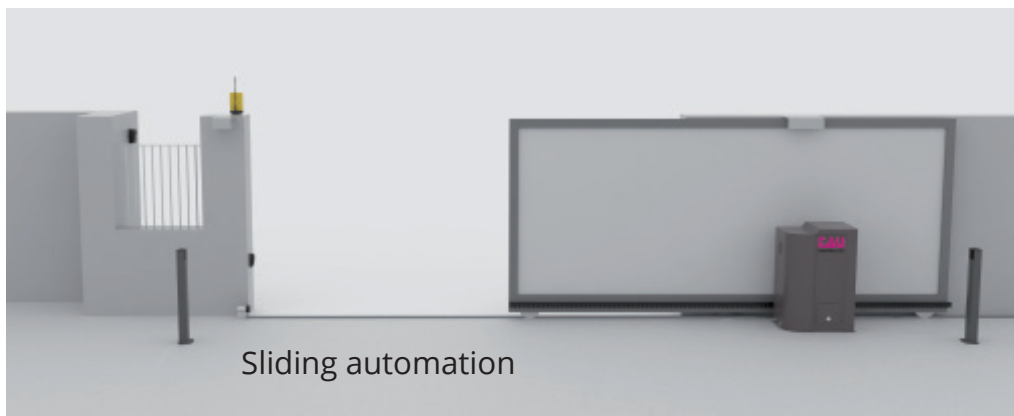
NETWORK FILTER FOR CE NORMS



FILTER-S12
Option for CE Norms

TYPE OF INSTALLATION

The control board D812M can be used for Industrial rapid doors and for sliding automation with threephase motors (delta connection) up to 2 Hp with ventilation systems.



CHECK THE SOFTWARE VERSION AND COMPATIBILITY WITH THE OPERATING MANUAL

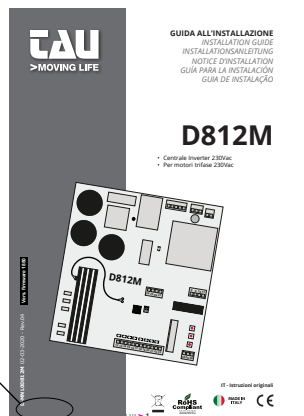
When the control unit is turn on, you can see 4 numbers in the display. This is the software number. We suggest to check this number with the version on the manual. (see pic).

CODE

2049

Vers. firmware 2049

! Check that the number on the display correspond to the firmware on the operating manual



1. SCHEME OF THE CONTROL UNIT

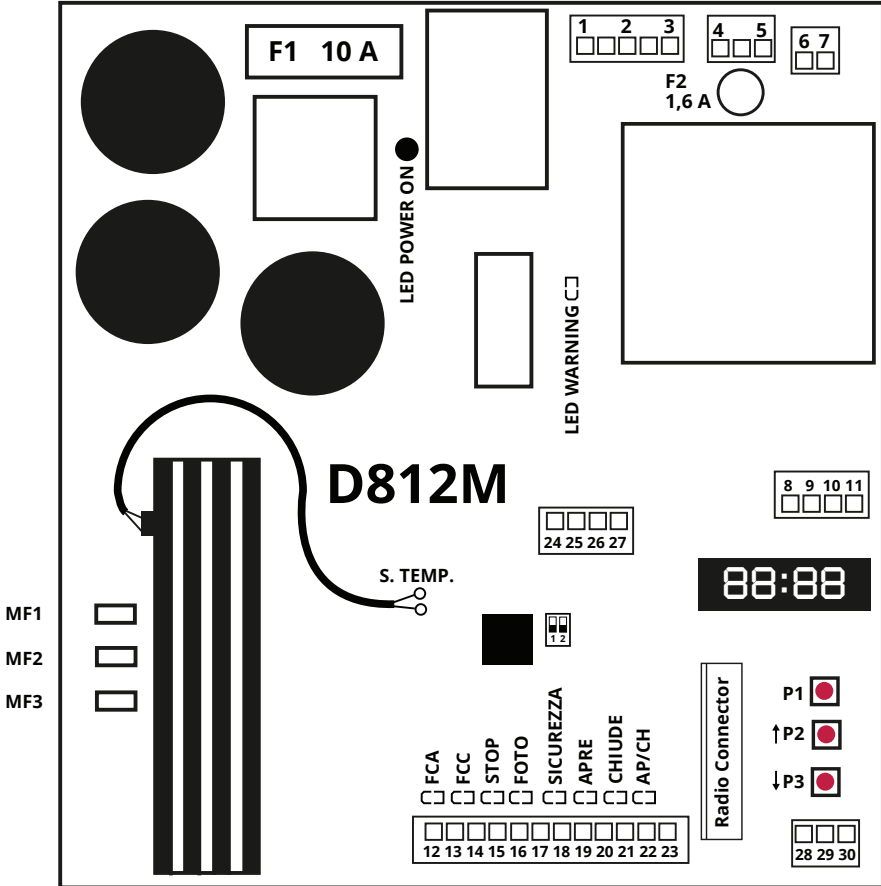
LED POWER ON

Indicates the network power



WARNING!

We remind you that the safety devices, accessories should be installed when the control unit is not powered.



P1 P2 P3 Set the control unit

DIP not used

JP1 Connector for temperature sensor

F1 Fuses protection motor and power: 10A

F2 Fused protection terminal boards (4, 5): 1.6A

MF1-2-3 Three-phases output for 230Vac motors delta connection

LED WARNING Indicates that the capacitors are still charged, before removing the control unit wait for the LED to go off.

The **red led** in the input **LSO-LSC-STOP-PHOTO-SAFETY** are **always lit on**

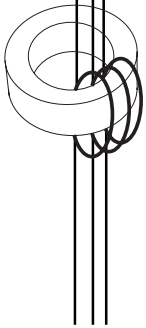
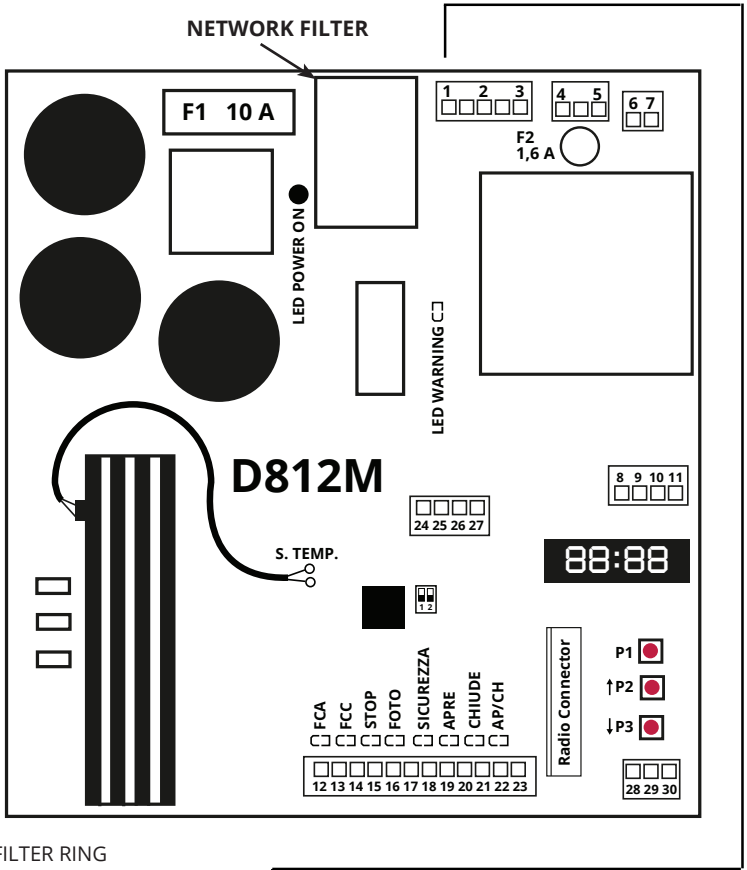
The **green led** in the inputs **OPEN-CLOSE-OP/CL** are **normally lit off**

LSO **LSC** **STOP** **PHOTO** **SAFETY** **OPEN** **CLOSE** **OP/CL**

WARNING: If the inputs are desactivated from display with **S13, S14, S15, S16, S17** red leds are

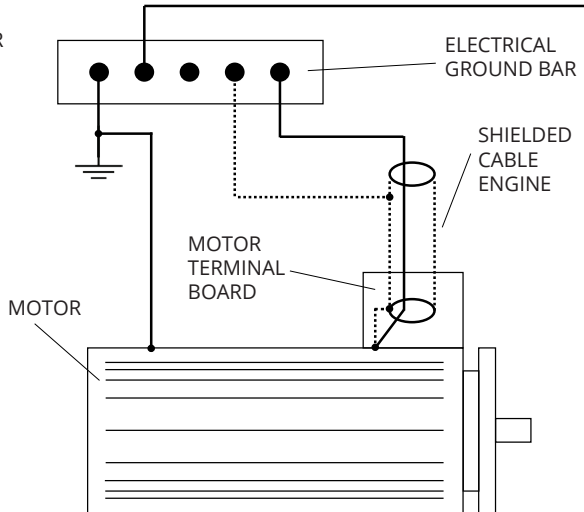
SWITCHED OFF

Recommended wiring diagram



FILTER RING
































CABLE MOTOR
OUTPUT
1 TURN



1.1 DESCRIPTION OF THE ELECTRICAL CONNECTIONS



In case of long sections of cables (> 20 m) for N.O./N.C. controls (ex. OPEN/CLOSE, STOP, PEDESTRIAN, etc.), in order to avoid gate malfunctions, it will be necessary to uncouple the various controls using RELAYS or using our 750T-RELE device.

Earth	1	  	Earth
230 Vac (N)	2		230 Vac 50Hz, power supply, neutral
230 Vac (L)	3		230 Vac 50Hz, power supply, phase
Signal light	4	   	230 Vac Signal light Max power 40 W
	5		
	6		<i>For the connection of a 12 Vac lamp or 230Vac signal light: See the par 3.2, page number 12</i>
Signal light	7		
Test	8	   	Clean contact for PHOTOCELL TEST
Test	9		Clean contact for TEST
Out 12 Vac	10		800mA auxiliary 12÷14 Vac output
Out 12 Vac	11		800mA auxiliary 12÷14 Vac output
LSO	12	           	Open limit switch
LSC	13		Closing limit switch
Stop	14		STOP
Photo A	15		PHOTO-A closing
Safety edge	16		N.C. contact (see S17 setting)
Open	17		OPEN
Close	18		CLOSE
OP/CL	19		OPEN / CLOSE input
Costa	20		SAFETY edge - NC / 8k2 contact
Common	21		Common Services Safeties
Common	22		Antenna Socks / Common-Services-Safeties
+ Antenna	23	+ Antenna	
N.U.	24	   	NOT USED
N.U.	25		NOT USED
Pedestrian	26		Partial opening / Interlock input
Common	27		Common Services Safeties
Out + 12 Vdc	28	  	Output + 12Vdc 60mA
Out - 12 Vdc	29		Output - 12Vdc 60mA
N.U.	30		NOT USED

2. USE AND FUNCTIONS OF THE CONTROL PANEL

D812M has a display for a simple and fast programming. The menu has been designed for a clear and fast set up of the working time and the logic of the control unit. You can set up the control unit only when the door is closed.

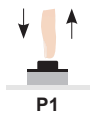
2.1 STATE OF THE CONTROL UNIT

If no button is pressed, the display shows the position of the automation and the temperature value of the IGBT heat sink.



In this case the door is with closing limit switch and that the heat temperature is 23°C.

2.2. SETTINGS AND PARAMETERS



ACCESS TO THE FUNCTIONS
Press **P1** when the gate is closed

SELECTION OF THE LETTER ADJUSTMENT
Press button **P2** and **P3** to select the group and press **P1** to confirm.



Set up T
Set up of the Time programming



Set up S
Logic of the control unit



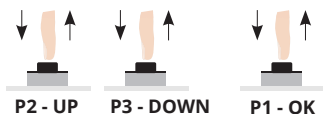
Set up L
Set up of the programm (Speed, power...)



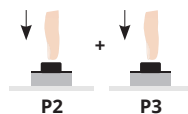
Set up R
Activation of the outputs Di-plays information about the control unit



Set up E
Back to the standard functions



SELECTION OF NUMBER SET UP
Press **P2** and **P3** to select the set up
Press **P1** to confirm



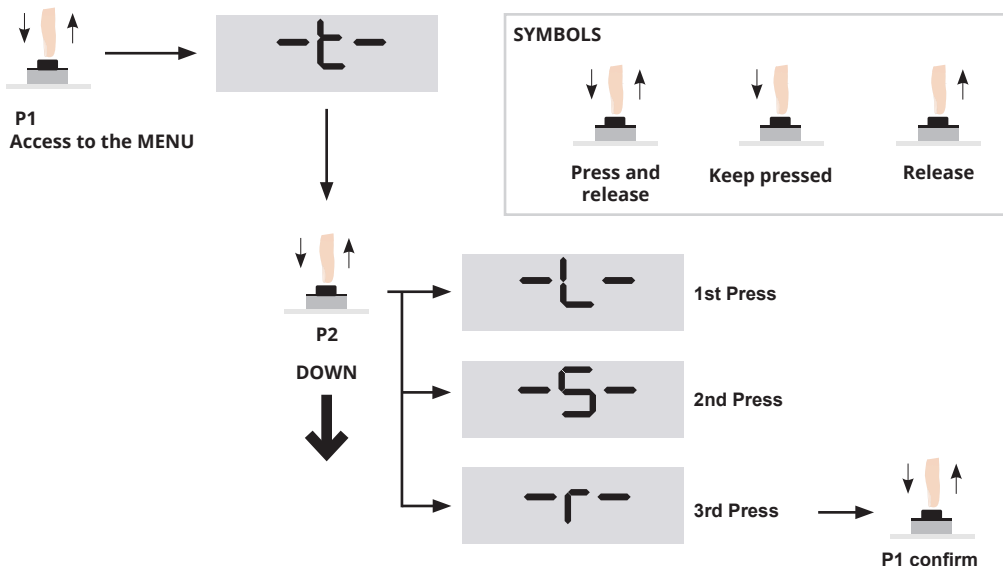
GO BACK
To go back to the previous group press **P2** and **P3**



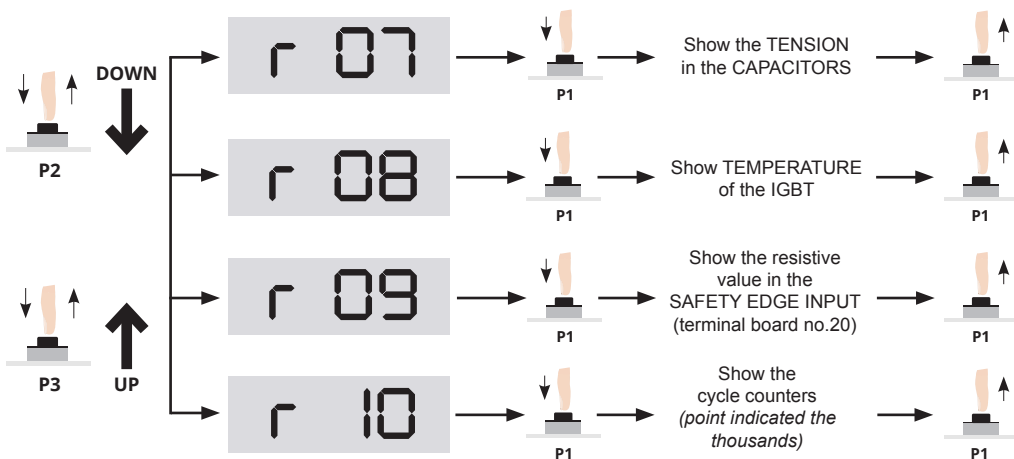
SELF-RESET
If the control unit is not used for more than one minute, the control unit go out from the programming saving programs and all changes.

2.3. EXAMPLE HOW TO USE THE MENU AND INFORMATION

You can read the information through a display: you can read if it is working properly, the manoeuvre counter and the sink temperature. Some information can be shown only on the **R** function (see Chapter no.4)



In the function **R** if you press **P1**, you can choose the group function: first select **P2** and **P3** and then confirm with **P1**. Now you can go to the function **R07**, **R08**, **R09** and **R10**.

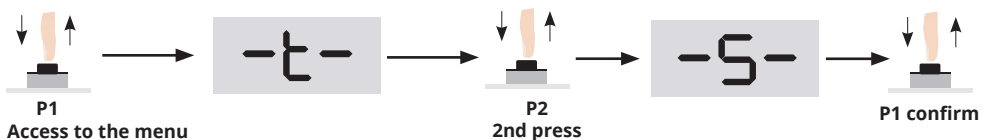


2.4. SET UP A PASSWORD FOR PROGRAMMING

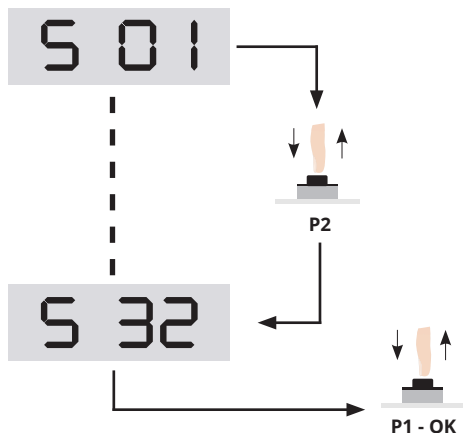
To save all changes it is possible to select a password of 4 numbers. To activate this function make as follow:

- Password activation:**

Press **P1**, **P2** and **P3** in the function **S32** and then confirm with **P1**.



In the function **S** if you press **P1**, you can choose the group function: first select **P2**, now you can go to the function **S32** and then confirm with **P1**.



• INSERT PASSWORD

Choose the first number with the buttons **P2** and **P3** then confirm with **P1**. The same procedure applies to the other digits.



finished entering the 4 digit. Press **P1** to confirm. To cancel press **P1**, within 10 seconds. Otherwise, the next access will be required the security code.



Pay attention in case you forget the password it is not possible to enter in control board as well.

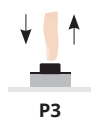
• Deactivation of THE password



If you select the function no. **S33** you can cancel the password. Wait 10 seconds to confirm the operation.

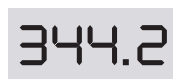
2.5. DISPLAY THE NUMBER OF CYCLES AND THE SPEED OF THE MOTOR

• Cycle counter



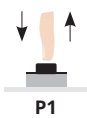
It is possible to show the number of cycles even pressing **P3** (*expressed in ten cycles*)

The counter counts up to 999'999 openings. The display shows the first 4 most significant digits.



If you read these number, it means that the installation has made 344200 cycles.

• Motor speed



Press **P1** when the door is open, the display shows the SPEED of the MOTOR

2.6. DESACTIVATION OF THE CYCLE WHEN THE CONTROL PANEL WILL BE TURNED ON

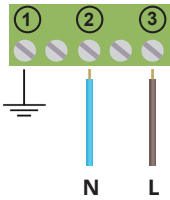
When the tension has been interrupted and you turn on the control board again it will make a new cycle. To exclude this operation make as follow:



DESACTIVATE THE COMPLETE CYCLE OF THE CYCLE FUNCTION WHEN THE TENSION HAS BEEN INTERRUPTED: keep pressed **P1** when turns on.

3. INSTALLATION OF THE CONTROL UNIT

3.1. CONNECTION OF THE TENSION AND MOTOR POWER SUPPLY



230 Vac

- The control unit is equipped with a network filter



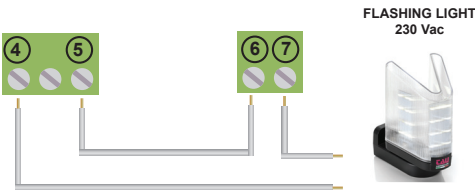
THREE-PHASE MOTOR CONNECTION (NO SINGLE-PHASE MOTOR)

We recommend:

- Install an automatic switch 10/16A
- Check the network power: 230 Vac: -5% +10%

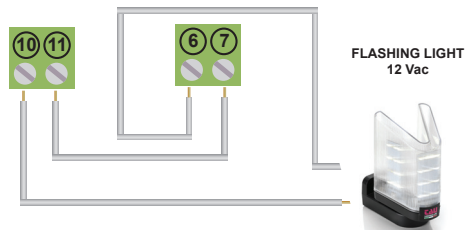
3.2. CONNECTION OF THE LAMP 230 VAC OR 12 VAC

It is shown the connection of a **230V** lamp with or without flashing card.



FLASHING LIGHT
230 Vac

It is shown the connection of a **12 Vac** lamp with or without flashing card.



FLASHING LIGHT
12 Vac

• Set up of the lighting

In case the lamp has no flashing card, set **S12** in 1:



FLASHING
1 - Activated (*standard*)
0 - Deactivated

• Lamp in pause time

To activate the function lamp in pause TIME, set **S05** as shown:



LAMP IN PAUSE
1 - Activated
0 - Deactivated (*standard*)

3.3. PRE-FLASHING TIME

It is possible to increase or reduce the time of pre-flashing when the door is closed or open, make as follow with **T07** and **T08**:



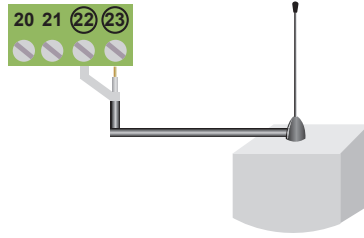
PRE-FLASHING TIME ON OPENING
From 0 to 10 s
Standard value 0.5 s



PRE-FLASHING TIME ON CLOSING
From 0 to 10 s
Standard value 2 s

3.4. CONNECTION OF THE AERIAL

In case the antenna is only a cable of 17cm for 433.92Mhz, connect it to the terminal board no. 23.

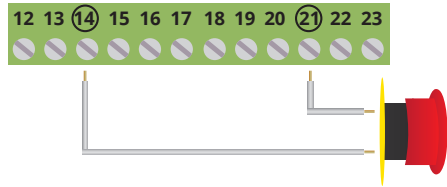


3.5. STOP CONNECTION

Button: Stop until a new command
Switch: it keep the automation stopped until a new command

5 15	STOP 1 - Activated (<i>Default</i>) 0 - Deactivated
------	---

The connection of the safety devices is prevued with a button or a normally closed contact
 More devices should be connected in parallel.

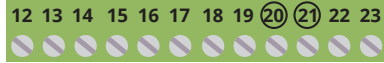


3.6. CONNECTION OF THE 8K2 SAFETY EDGE OR N.C. CONTACT

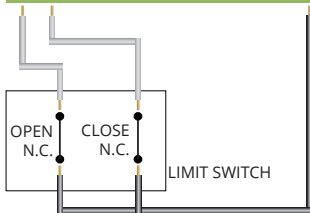
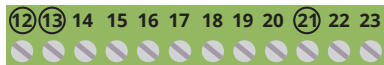
Connect the safety edge at terminal board no. 20 and 21

5 22	SAFETY EDGE 0 - Deactivated 1 - Activated (<i>Default</i>)
------	--

5 38	SAFETY EDGE contact 0 - NC contact (normally closed) (<i>Default</i>) 1 - 8K2 contact
------	---



3.7. CONNECTION OF THE OPEN AND CLOSE LIMIT SWITCH



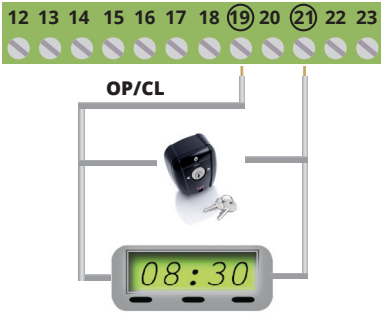
5 13	LSO 1 - Activated (<i>Default</i>) 0 - Deactivated
------	---

5 14	LSC 1 - Activated (<i>Default</i>) 0 - Deactivated
------	---

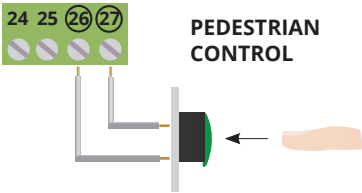


If the input LSO & LSC is not used, set S13 & S14 in 0

3.8. THE CONNECTION OF PEDESTRIAN OR OP/CL



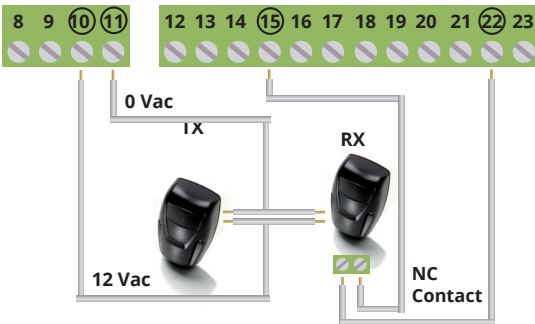
The connection of a OP/CL command can be done with a button or with a N.O. contact. When more devices are available, connect them in parallel.



The connection of PEDESTRIAN can be done with a button or a normally open contact.

It is possible to connect a timer in the terminal board no. 19 and 21 to program the opening time of the gates. The contact of the timer should be normally open (N.O.) and it should be closed for all the time the gate is open. If the connection of opening command is available in the terminal board no 19, connect it in parallel.

3.9. CONNECTION OF THE PHOTOCELL (ONLY WHEN CLOSING)

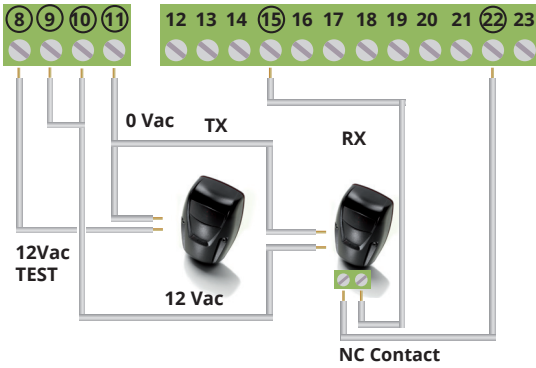


The contact of the receiver should be:
 - **Isolated** (*isolated from tensions*)
 - **Normally closed**



If the PHOTOCELL input is not used, S16 must be set to 0

3.10. CONNECTION OF THE PHOTOCELL (ACTIVATED WHEN CLOSING) WITH TEST



The TEST of the photo-beam works only if the photo-beams are installed properly. The control unit will check all connections before opening!

In case the photo-beam are not working properly the control unit will lit on for 5 seconds and the gate is not moving.

If you go back to function without TEST, do the connection as in Par. 3.9 and put in **0** the **S06** and **S09** (deactivate the latter only if there are no other inputs connected to TEST)

To activate the **TEST** set **1** in the **PHOTO-A**:

5 09

TEST IN PHOTO OUTPUT

1 - Activated

0 - Deactivated (*default*)

5 06

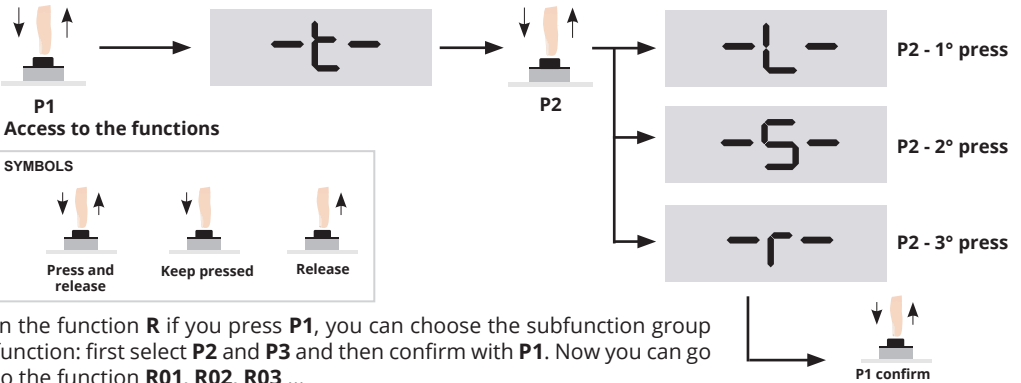
TEST IN THE INPUT SAFETIES

1 - Activated

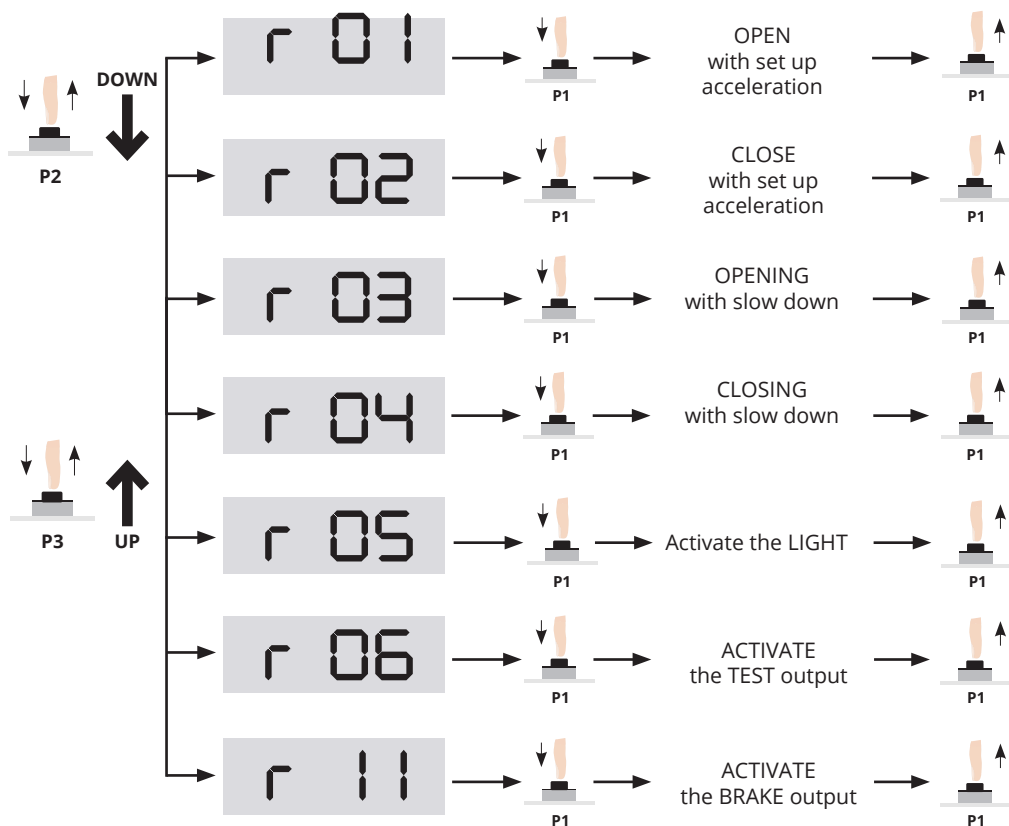
0 - Deactivated (*default*)

4. ACTIVATE THE SINGLE OUTPUTS

D812M can open and close separately and the outputs for lamps and test. This is useful in case you want to check the single outputs.



In the function **R** if you press **P1**, you can choose the subfunction group function: first select **P2** and **P3** and then confirm with **P1**. Now you can go to the function **R01**, **R02**, **R03** ...



5. OPERATING MODES AND ADJUSTMENTS

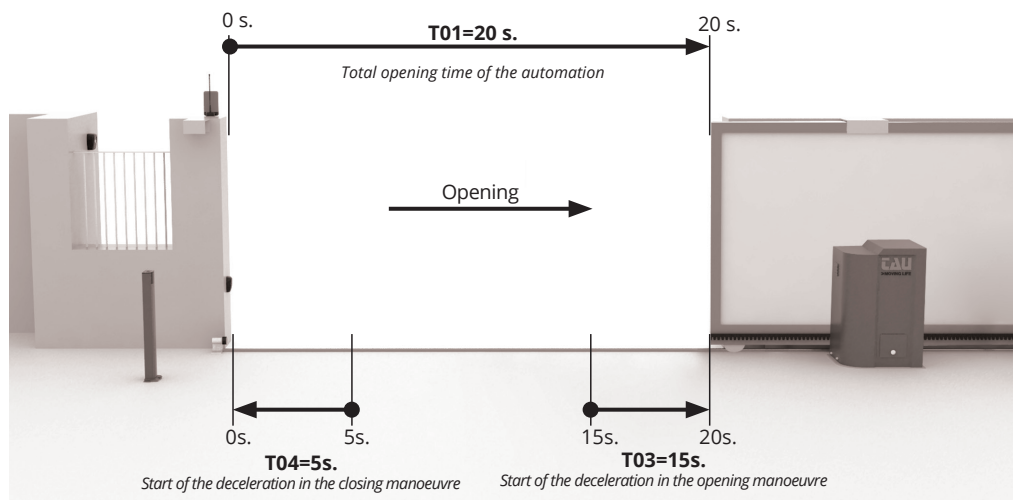
5.1. LOGIC OF FUNCTIONS

Imp. N°		Functions	Description
S 01	1	Signal Reverse	By each START command inverts: OPEN-CLOSE It recloses automatically
	2	Automatic	The START command can open or recharge the pause time. It recloses automatically
	3	Bistable function	By each START command it follows: open-stop-close-stop-open... It doesn't recloses automatically
	4	Stable function with automatic reclosing after pause time	By each START command it opens-stops-closes-stops-opens... It recloses automatically after pause time
	5	Signal reverse + Dead-man function	Same as function S01 - 1 OPEN and CLOSE with "Dead-man function" function
	6	Collective use + Dead-man function	Same as function S01 - 2 OPEN and CLOSE with "Dead-man function" function




	7	Bistable function + Dead-man function	Same as function S01 - 3 OPEN and CLOSE with "Dead-man function" function
	8	Bistable function with automatic reclosing after pause time + Dead-man function	Same as function S01 - 4 OPEN and CLOSE with "Dead-man function" function
S 02	1	Reclosing when turning on (Standard value 0)	Complete open and close. ONLY when the tension has been interrupted when the gate is open.
S 04	1	Photocell contact (Default 0)	Al passaggio rilevato dalle fotocellule, in apre se S07 è 0 imposta tempo di pausa a 2 s.
S 07	1	Close after photocell (Default 0)	Put S04 in 1. When the following function is active on the passage detected by the photocells on opening, the control unit reverses the motor motion and closes.
T 18		Automatic opening after the time set (Default 00)	It is possible to activate the automation opening after the set time, from 1 to 99 minutes. (00 If the function is deactivated). Attention, choose a mode of operation with automatic reclosing.

5.2. WORKING TIME

You can see how to program the control unit with **T** function:



SET UP	DESCRIPTION		VALUES ACCEPTED	STANDARD - seconds -
T 01	<p>Setting the total working time of the opening</p> <p>From the FCC closing limit switch to the FCA opening limit switch the time increases from 0s ÷ 20s. Vice versa, from the FCA opening limit switch to the FCC closing limit switch, the time decreases from 20s ÷ 0s (countdown).</p> <p>It is recommended to set the time T01 with a few extra seconds of work</p>	step da 0,1 s	front 0,1 to 990 s	20,0

T 02	Setting the pedestrian opening time	step da 0,1 s	front 0,1 to 990 s	3,0
T 03	Setting the starting slowdown position on opening  If we want the gate to slow down the last 5s, just set 15s on T03 and the gate will start to slow down from 15s to 20s. <i>Ex.: T01 = 20s assumed slowdown time = 5s</i>	step da 0,1 s	front 0,1 to 990 s	15,0
T 04	Setting the starting slowdown position on closing  To set the slowdown on closing, the work time works as a countdown, so if we want the gate to slow down the last 5s, just set 5s on T04 and the gate will start to slow down from 5s to 0s. <i>Ex.: T04 = 5s When T01 reaches 5s from 20s, the slowdown starts.</i>	step da 0,1 s	front 0,1 to 990 s	5,0
T 10	Extra time for limit switch search  In order to avoid that, due to errors in counting the operating time, the motor cannot open or close completely, an extra limit switch search time can be set. We recommend setting at least 5 s as per DEFAULT	step da 0,1s	da 0,1 a 990s	5,0 ???

5.3. SET SPEED AND ACCELERATION

Are now given the parameters that allow you to set SPEED, ACCELERATION and ABSORPTION:

Set up	Description	Values accepted	Default
L 01	<i>Minimum speed OPENING</i>	<i>from 1 to 50</i>	30
L 02	<i>Minimum speed CLOSING</i>	<i>from 1 to 50</i>	30
L 03	<i>Maximum speed OPENING</i>	<i>from 1 to 120</i>	80
L 04	<i>Maximum speed CLOSING</i>	<i>from 1 to 120</i>	80
L 05	<i>OPENING acceleration</i>	<i>from 1 to 10</i>	5
L 06	<i>CLOSING acceleration</i>	<i>from 1 to 10</i>	5
L 07	<i>OPENING deceleration</i>	<i>from 0 to 10</i>	5
L 08	<i>CLOSING deceleration</i>	<i>from 0 to 10</i>	5
L 09	<i>Motor absorption in case of STOP</i>	Ampere	9,0
L 10	<i>Motor absorption in case of problems</i>	Ampere	12,0
L 11	<i>Not used</i>	<i>from 1 to 70</i>	50

5.4. SCHEME RELATION BETWEEN SPEED AND FREQUENCY OF THE MOTOR

Here is the relation between speed and frequency of the motor:

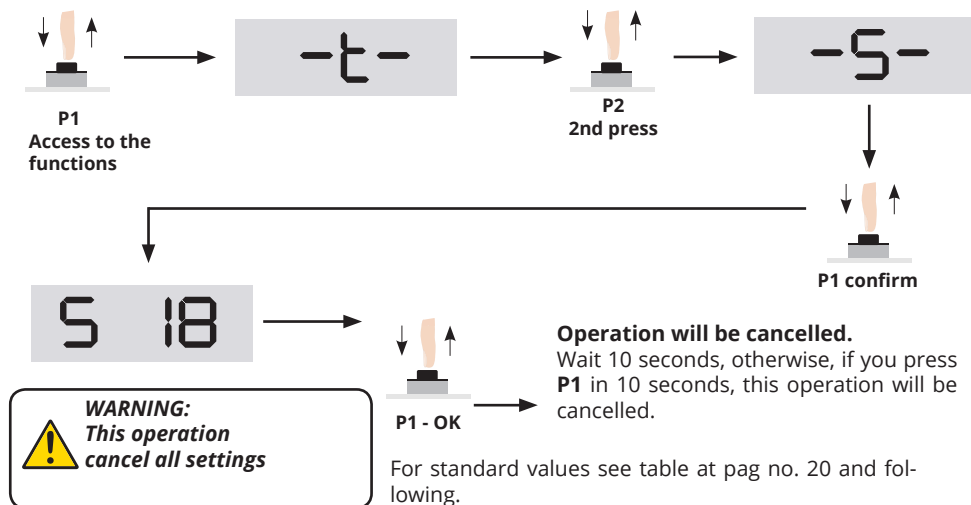
SPEED SETTING	FREQUENCY [Hz]
1	12
5	14.50
10	17.00
15	19.50
20	22.00
25	24.50
30	27.00
35	29.50
40	32.00
45	34.50
50	37.00
55	39.50
60	42.00
65	44.50
70	47.50
75	49.50
80	52.00
85	54.50
90	57.00
95	59.50
100	62.00
105	64.50
110	67.00
115	69.50
120	72.00

6. RESET OF THE CONTROL UNIT AND RESTORE OF FACTORY DEFAULT SETTINGS

The control unit allows the parameters to be reset to their DEFAULT value (see par. 6.1), and also allows you to recall parameters stored specifically for the operation of the sliding gates.

6.1. RESTORE FACTORY SETTINGS

Checking those parameter of the parameters (Chapter no.7), you can look the set up during the RESET of the control unit. Select the paragraph S18 as shown:



6.2. SAVE SET UP AND CHECK OF THE PARAMETERS

D812M has **2 memory slots** saving all manually set up and you can check it again. See how to check the set up with functions **S23, S24, S25, S26**. Once all parameters are set up, it is possible to change.

Thanks of the 2 memory slots, it is possible to save and check 2 differents set up.

• MEMORIA 1 (slot 1)

S 23

Press P1
Save all set up
MEMORY 1

S 25

Press P1
Charge set up of
MEMORY 1

• MEMORIA 2 (slot 2)

S 24

Press P1
Save all set up
MEMORY 2

S 26

Press P1
Charge set up of
MEMORY 2

7. LIST OF THE FUNCTIONS D812M

Group functions "T"					
SET UP	DESCRIPTION		VALUES ACCEPTED	STANDARD - seconds -	MEMO
T 01	Complete opening cycle time	step from 0,1 s	from 0,1 to 990 s	20,0 s	
T 02	Partial opening time	step from 0,1 s	from 0,1 to 990 s	3,0 s	
T 03	Setting the starting slowdown position on opening	step from 0,1 s	from 0,1 to 990 s	15,0 s	
T 04	Setting the starting slowdown position on closing	step from 0,1 s	from 0,1 to 990 s	5,0 s	
T 05	Automatic closing time	step from 0,5 s	from 2 to 127.5 s	2,0 s	
T 06	Pause time for PARTIAL OPENING	step from 0,5 s	from 2 to 127.5 s	5,0 s	
T 07	PRE-LIGHTING time by opening	step from 0,5 s	from 2 to 127 s	0,5 s	
T 08	PRE-LIGHTING time by closing	step from 0,5 s	from 2 to 127 s	2,0 s	
T 09	<i>(Not used)</i>				
T 10	Extra time for limit switch search	step from 0,1 s	from 0,1 to 990 s	5,0 s	
T 11	Stop the detection of input of the photo-beam. Not considered if S03 is set 1	step from 0,1 s	from 0,1 to 990 s	0,5 s	
T 12	<i>Time to stop to detect the SAFETY EDGE INPUT (terminal board. 16)</i>	step from 0,5 s	from 0,1 to 2 s	1,0 s	
T 13	Time block the check of the absorption of the motor when the gate is opening or closing	step from 0,1 s	from 0 to 2 s	0,2 s	
T 14	Pause time of reverse of the direction of the motor	step from 0,1 s	from 0 to 2 s	0,1 s	
T 15	STOP of the motor after detecting the LSO	step from 0,1 s	from 0 to 3 s	0 s	
T 16	Time of delay of the motor when detecting the LSC	step from 0,1 s	from 0 to 3 s	0 s	
T 17	Lead time on the release of the brake before starting the engine <i>(in tenths of seconds)</i>		from 0 to 20	12	
T 18	Automatic opening after the time set <i>(00 If the function is deactivated)</i>	step from 1 min	from 00 to 99 min	00	

Group functions "L"			
SET UP	DESCRIPTION	VALUES ACCEPTED	STANDARD - seconds -
L 01	Minimum opening speed	from 1 to 50	30
L 02	Minimum closing speed	from 1 to 50	30
L 03	Maximum opening speed	from 1 to 120	80
L 04	Maximum closing speed	from 1 to 120	80
L 05	Opening acceleration	from 1 a 10	5
L 06	Closing acceleration	from 1 a 10	5
L 07	Opening deceleration	from 0 to 10	5
L 08	Closing deceleration	from 0 to 10	5
L 09	Maximum absorption of the motor to STOP the door	in Ampere from 0,5 to 13	9,0
L 10	Maximum absorption of the motor in case of trouble	in Ampere from 0,5 to 13	12,0
L 11	Power of the output BRAKE	from 0 to 70	50

Group functions "S"				
SET UP	DESCRIPTION	VALUES ACCEPTED	STANDARD	MEMO
S 01	<i>Logic of the motor:</i> 1 - Fast reverse 2 - Collective use 3 - Bistable function 4 - Bistable function with automatic reclosing 5 - Fast reversing and "Dead's man" function 6 - Collective use and "Dead's man" function 7 - Bistable function and "Dead's man" function 8 - Bistable function with automatic reclosing and "Dead's man" function	from 1 to 8	4	
S 02	Opening-closing cycle when the door is not closed	0 Off - 1 On	0	
S 03	Deactivate the input PHOTO A after intervention of the slow down LSC	0 Deactivated - 1 Activated	0	
S 04	Photocell contact activation	0 Off - 1 On	0	

S 05	Signal light in pause time	0 Off - 1 On	0
S 06	Activation TEST in the safeties inputs	0 Off - 1 On	0
S 07	Close after photocell	0 Off - 1 On	0
S 08	NOT USED	leave on 2	2
S 09	Activate the TEST in the input PHOTOCELL	0 Off - 1 On	0
S 10	Activate the TEST in the SAFETY EDGE input	0 Off - 1 On	0
S 11	Activate the TEST in the input STOP	0 Off - 1 On	0
S 12	Activate the flashing in the signal light input	0 Off - 1 On	1
S 13	Activate the input LSO	0 Off - 1 On	1
S 14	Activate the input LSC	0 Off - 1 On	1
S 15	Activate STOP input	0 Off - 1 On	1
S 16	Activate the PHOTOCELL by closing	0 Off - 1 On	1
S 17	Security	0 Off - 1 On	0
S 18	Reset of the control unit at factory's settings		
S 19	NOT USED		
S 20	Activated the input SWITCH for opening slowing down	0 Off - 1 On	0
S 21	Activate the input swicht for CLOSING slowing down	0 Off - 1 On	0
S 22	Activate the input for SAFETY EDGE (terminal 20-21)	0 Deactivated - 1 Activated	1
S 23	Copy set up of memory 1		
S 24	Copy set up of memory 2		
S 25	Charge the set up of memory 1		
S 26	Charge the set up of memory 2		

S 27	Charge the standard set up 1			
S 28	Charge the standard set up 2			
S 29	Charge the standard set up 3			
S 30	Charge the standard set up 4			
S 31	Charge the standard set up 5			
S 32	Activate of a password to set up with a code of 4 numbers. Put the new code and let the time goes.			
S 33	You can deactivate the access of the set up with a password			
S 34	Activation of the security closing after intervention of the edge (20-21)	0 deactivated - 1 activated		0
S 35	NOT USED	leave on 0		0
S 36	NOT USED	leave on 0		0
S 37	Integrated electric brake (activated for 2 seconds after motor stopping)	1= light acceleration 4 = heavy acceleration 5=neither acceleration nor braking 6= light braking 9= heavy braking		4
S 38	Safety edge - contact terminal board no.20-21	0: N.C. contact - 1: 8K2 contact		0
S 39	Opening / Closing in case of emergency	0 deactivated - 1 activated		0

Group functions "R"	
SET UP	DESCRIPTION
R 01	Activate Opening until P1 has been released with acceleration set up
R 02	Activate CLOSING until P1 has been released with acceleration set up
R 03	Activate the OPENING until P1 has been released with slow down acceleration
R 04	Activate CLOSING until P1 has been released with slow down set up
R 05	Activate LIGHT/SIGNAL LIGHTH until P1 has been released
R 06	Activate TEST output until P1 has been released
R 07	Display the tension of the capacitors until P1 has been released
R 08	Display temperature of the IGBT until P1 has been released
R 09	Display the resistive value in the SAFETY EDGE input (terminal board no.20) until P1 has been released
R 10	Display the number of cycles number of cycles until P1 has been released (<i>point indicated the thousands</i>)

R 11	Activate the brake output
------	---------------------------

8. PROBLEMS

Here are listed some functions issue indicated in the display. You can see the causes and the procedure to solve the issue..

PROBLEM	DESCRIPTION	SOLUTION
Er01	OVERVOLT on bus	There is a tension of 240 Vac in the capacitors. <i>Check the network tension.</i>
Er02	OVERCURRENT in the MOTOR	The overcurrent level of programm L10 has been exceeded. <i>If necessary increase the value.</i>
Er03	Tension in the capacitors too low	The tension in the capacitors is too low. <i>Check the network tension.</i>
Er04	Absorption at 1.5 A when the motor is not working	The control unit has an absorption of more than 1,5A even if the motor is not working. <i>Check the accessories and the motor.</i>
Er05	Security code not correct	Code not correct. <i>Try a new code.</i>
Er06	Exceeded temperature of the spendthrift IGBT	<i>Wait until the temperature in the spendthrift is reduced.</i>
Er07 Er 17 Er27 Er67 Er77	Signal error of the encoder	Check the encoder connections
CO 5.2	N.C. contact - Safety edge open	<i>Check terminals 20-21 (see paragraph 3.6)</i>

10 Declaration of CE conformity

(according to EC Directive 2006/42, Attachment II, part 1, ses. A)

The undersigned **Loris Virgilio Danieli**,
Administrator

DECLARES THAT:



Company:

TAU S.r.l.

Address:

Via Enrico Fermi, 43
36066 Sandrigo (VI) Italia

Product's name:

D812M
Centrale Inverter 230Vac

THE PRODUCT COMPLIES with what is outlined in the European Community directive:

2006/42/CE	EC DIRECTIVE 2006/42 ISSUED BY THE EUROPEAN PARLIAMENT AND COUNCIL on may 17, 2006 harmonizing the legislation of the member countries regarding machinery.
-------------------	---

Reference: Attachment II, part 1, ses. A (EC Declaration of Conformity issued by the manufacturer).

THE PRODUCT COMPLIES with what is outlined in the European Community directives:

2014/35/CE	DIRECTIVE 2014/35/EU OF THE EUROPEAN PARLIAMENT AND OF THE COUNCIL of 26 February 2014 on the harmonisation of the laws of the Member States relating to the making available on the market of electrical equipment designed for use within certain voltage limits.
-------------------	---

Reference to harmonized standards: EN 60335-1

2014/30/CE	DIRECTIVE 2014/30/EU OF THE EUROPEAN PARLIAMENT AND OF THE COUNCIL of 26 February 2014 on the harmonisation of the laws of the Member States relating to electromagnetic compatibility.
-------------------	---

Reference to harmonized standards: EN 61000-6-2 EN 61000-6-3

IL PRODOTTO E' CONFORME with the essential requirements of article 3 of the following European Community Directive, for the use for which the product is designede

2014/53/CE (RED)	DIRECTIVE 2014/53/EU OF THE EUROPEAN PARLIAMENT AND OF THE COUNCIL of 16 April 2014 on the harmonisation of the laws of the Member States relating to the making available on the market of radio equipment
-------------------------	---

Reference to harmonized standards: ETSI EN 300 220-3 ETSI EN 301 489-1 ETSI EN 301 489-3

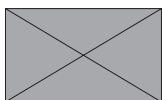
The directive 2006/42/CE remind that it is not allowed the function of the product until the machine, for which the product is included, is not identifiy and declared conformed to the 2006/42/CE directive.

TAU S.r.l.
Via Enrico Fermi, 43
36066 Sandrigo (VI) Italia
Tel +39 0444 750190
Fax +39 0444 750376

info@tauitalia.com
www.tauitalia.com

Sandrigo, 01/06/2017
The Administrator
Loris Virgilio Danieli





Via Enrico Fermi, 43 - 36066 Sandrigo (VI) - Italy
Tel +39 0444 750190 - Fax +39 0444 750376
info@taitalia.com - www.taitalia.com